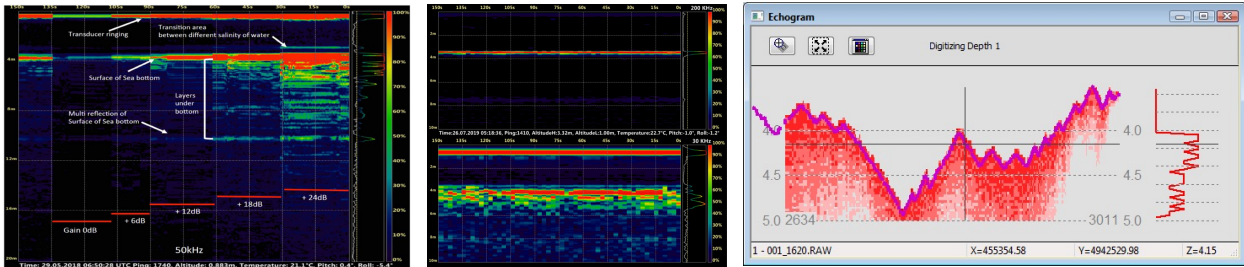


Ultracompact

Echologger EU D24/ ECT D24 is an ultracompact portable dual frequency single beam echosounder for hydrographic and environmental survey applications. The device carries two frequencies (450 & 200kHz) working simultaneously (alternating). It is a self-contained device with a transducer, operating electronics and a tilt sensor in an ultracompact single unit.

Digital echogram replacing paper chart

Echologger EU D24/ ECT D24 operates in echogram mode recording high resolution full water column acoustic envelope as well as in digital depth mode generating NMEA compatible digital altitude data



Compatibility

Echologger EU D24/ ECT D24 works with most of data collectors in the market through USB, RS-232C or Bluetooth. It is also compatible with major hydrographic data acquisition softwares such as HyPack, HydroMagic and free Echologger Control Program.

Quick and easy mobilization

Echologger EU D24 / ECT D24 mobile kits can support quick and easy mobilization with optional Bluetooth power pack or directly to data collector/mini PC through USB port or long-range wifi module



- USV application
- EU D24/ ECT D24
 - RTK/PPK GNSS
 - Survey poles
 - Mounting bracket

- Small boat application
- EU D24 / ECT D24
 - RTK/PPK GNSS
 - Survey pole
 - Mounting bracket
 - Rugged tablet / Data collector

- Small boat application
- EU D24 / ECT D24
 - RTK/PPK GNSS
 - Survey pole
 - Mounting bracket
 - DU-BS21 (BT power pack)

- Small boat application
- D24
 - RTK/PPK GNSS
 - Survey poles
 - Mounting bracket
 - Long-range WiFi

Specifications

Acoustic Frequency	200 kHz / 450 KHz
Beam width	10° / 5° Conical (-3dB) (echo mode)
Transmit Pulse Width	10µsec ~ 200µsec
Transmit Power	Max. 50 W, adjustable
TVG Control	Up to 60 dB,
Gain Control	-30 dB to +30 dB
Operating Distance Range	0.5 m ~ 200 m (200 kHz) / 0.15 m ~ 100 m (450 kHz)
Repetition (Ping) Rate	100 Hz max
Sampling Rate	Max 100 kHz; adjustable, or auto mode (default)
Water Column Resolution	Appx. 7.5 mm @ 100 kHz sampling
Altimeter Range Resolution	1.0 mm
Temperature sensor Resolution	0.1°C
Tilt sensor integrated	Dual-axis (Roll & Pitch) ±90°, Inclination data resolution 0.1°
Digital Output Interface	EU D24: USB 2.0 ECT D24: RS-232, RS-485 (selectable)
Communication Speed	EU D24: 4,800 ~ 921,600, 3M baud (115,200 baud default) ECT D24: 4800 ~ 921,600 baud (115,200 baud default)
Data Output Format	Profile 10/12bit resolution ASCII Text Profile 12bit Binary / 8bit companded Binary Altitude NMEA0183 / Simple Altimeter Deso-25 Sonarmite DFX
Configuration and Data reading	Echologger Echosounder Control Program (Dual) or any Terminal program
Multi node Internetworking (RS485 only)	Up to 32 units
Connector	EU D24: LTW 12-05PMMS-SH8003 ECT D24S: LTW M12A-08PMMS-SH8002 ECT D24: SEACON MCBH8SS
Power supply	EU D24: USB Powered, 2W max ECT D24: 10 ~ 75 VDC, 2W max, Internally isolated
Operation Temperature	-10°C +50°C
Operating Depth	EU D24 / ECT D24S: 1m (for surface vehicle) ECT D24: 100m, 300m, 1000m & 6000m
Housing	Acetal
Dimensions	Ø56 mm x L80 mm (without connector)
Weight	240g (without cable)
Other features	Use both frequencies simultaneously or separately Compatible with major hydro-graphic softwares (Hypack, HydroMagic, HydroPro etc.) GPS integrated data

EofE Ultrasonics Co., Ltd.

303, Venture Center, Hanggongdaehangro 76
Goyang-Si 10540, Korea
Tel : +82-2-3158-3178
info@echologger.com

