

AUTONOMOUS PRECISION ECHOSOUNDER

ECHOLOGGER EA400

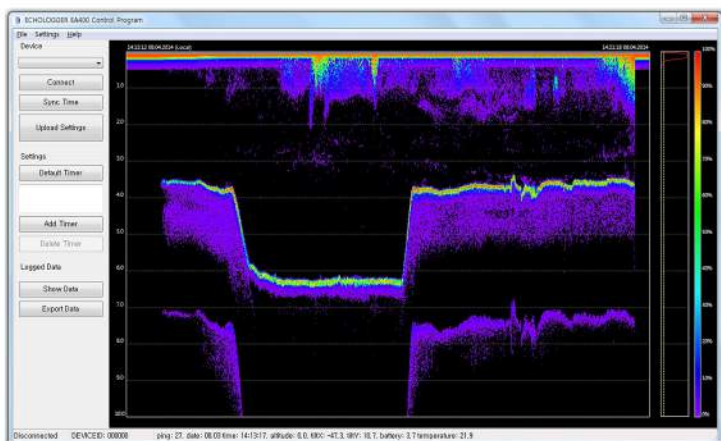
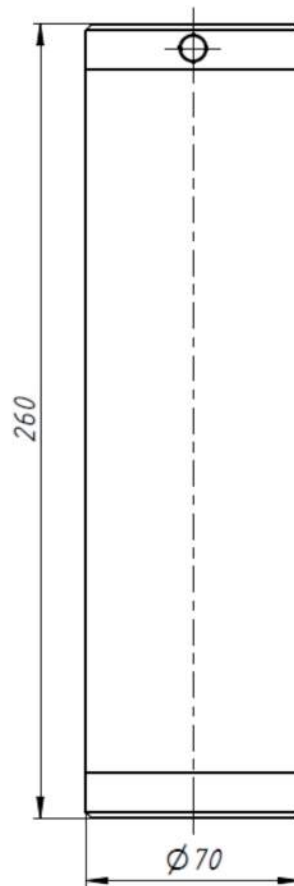


FEATURES

- Fully self-contained Echosounder
- Backscatter data collection along full water columns
- Long Life with 3 D-type alkaline batteries
- Ideal for long-term monitoring with a 32GB SD card
- High speed downloading via the SD card
- Bluetooth Communication for real-time monitoring
- User friendly GUI software provided
- Deep sea version available (up to 1,000m)
- Very unique in the market

APPLICATIONS

- Sediment Monitoring
- Accurate Backscatter Data
- Altitude Measurement
- Wireless Real-time Bottom Tracking
- Wave Height/ Tide Monitoring
- Bridge Scour Monitoring



SPECIFICATION

Working Mode	Echosounder / Altimeter
Acoustic Frequency	450 KHz
Beam Width	5° (-3dB) Conical Beam
Transmit Pulse Duration	10 µsec to 200 µsec in 10 µsec steps
Ranges	0.15 m to 100 m
Temperature Resolution	0.1°C
Temperature Accuracy	0.5°C (-10°C to +50°C)
Sample Rate	100 kHz
Water Column Resolution	Up to 7.5 mm
Repetition (Ping) Rate	Up to 10 Hz
Range Resolution	Up to 1 mm
Tilt sensor	
Dual-axis, Horizontal Operation	±90° (up, down)
Inclination Data Accuracy	0.1°
PC Interface	USB 2.0 (Bluetooth v2.1 optional)
Data Output Format	Binary, ASCII TXT, NMEA0183
Data Storage Mdeia	Micro SD Card (up to 32GB, SDHC)
Downloading Media	Removable Micro SD card, USB, Bluetooth
Activation	Magnetic Switch or Activation Button
Operation Mode Indication	Dual Color LED
Power Supply	3 D-type Alkaline Batteries
Operation Lifetime	up to 1 Year (depend on ping rates)
Operation Temperature	-10°C to +50°C
Maximum Operating Depth	100 m (deeper versions available on request)
Housing Material	PVC
Dimensions	D70mm x L260mm
Weight	1.5kg in Air with Batteries (0.5kg in Water)
