

# HIGH RESOLUTION SCANNING SONAR ECHOLOGGER RS900



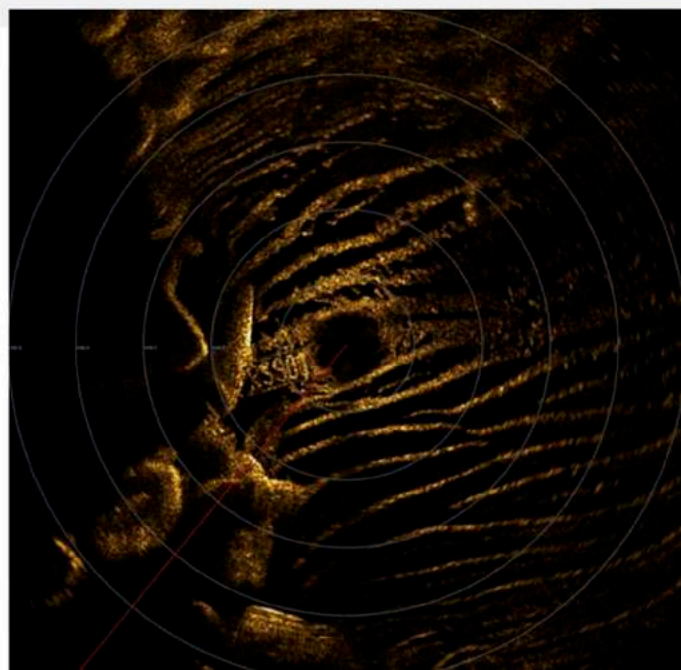
## APPLICATIONS

- Search & Recovery
- Navigation for ROV/AUVs
- Mine detection
- Harbor security
- Scour monitoring



## FEATURES

- Real time underwater imaging using acoustics
- High resolution images with a piezo-composite broadband transducer
- Motion sensing using Compass & Gyro.
- High scanning speed
- Full 360° scan & Sector scan
- Digital CHIRP technology
- Non-contact rotational scanning mechanism
- Easy deployment



## SPECIFICATION

---

<b>Pulse</b>	CHIRP & CW
<b>Driving Freq.</b>	900 kHz
<b>Beam Angles</b>	H0.8°, V30.0°
<b>Max. Range</b>	60m
<b>Range Resolution</b>	15 mm @50kHz , 7.5 mm @100kHz sampling
<b>Rotational Contact</b>	Noncontact Transformer
<b>Angle Resolution</b>	0.1125°, 0.225°, 0.45°, 0.9°, 1.8°
<b>Max. Scanning Speed</b>	4sec @ 5 m, 0.9°
<b>Transmitting Pulse Length</b>	512 us (CHIRP), 10 - 100us (CW)
<b>TVG</b>	60 dB
<b>Gain Control</b>	-30 dB ~ +30 dB
<b>Interface MRS</b>	RS232 / RS485 up to 3Mbaud
<b>Motion Compensation</b>	Enabled using Compass & Gyro.
<b>Power Supply</b>	12 - 72 VDC, 6W Max
<b>Data Transmission</b>	2 Mbaud @300m , 115200 baud @1 km
<b>Connector</b>	SUBCONN MCBH4M (MCBH8M)
<b>Depth Rate</b>	1000 m
<b>Material</b>	Al (Hard Anodised)
<b>Dimensions</b>	Dia. 140 mm, Height 120 mm
<b>Weight</b>	2.6 kg(air) / 0.9 kg(water)

---