



Echologger EU D032 / ECT D032

Ultracompact survey grade SBES

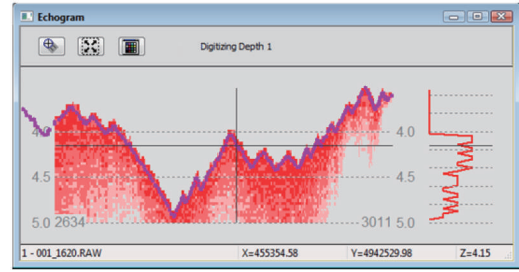
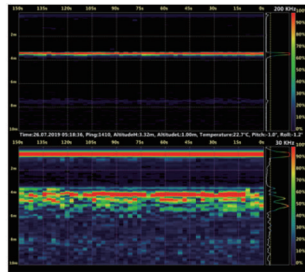
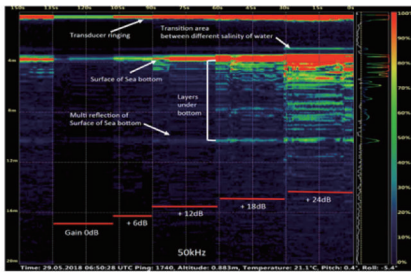
for hydrographic and environmental survey

Ultracompact

Echologger EU D032/ ECT D032 is an ultracompact portable dual frequency single beam echosounder for hydrographic and environmental survey applications. The device carries two frequencies (30 & 200kHz) working simultaneously (alternating). It is a self-contained device with a transducer, operating electronics and a tilt sensor in an ultracompact single unit. Singal can penetrate through soft sediments to detect hard bottom classification as well as detect the surface layer.

Digital echogram replacing paper chart

Echologger EU D032/ ECT D032 operates in echogram mode recording high resolution full water column acoustic envelope as well as in digital depth mode generating NMEA compatible digital altitude data



Combability

Echologger EU D032/ ECT D032 works with most of data collectors in the market through USB, RS-232C or Bluetooth. It is also compatible with major hydrographic data acquisition softwares such as HyPack , HydroMagic and free Echologger Control Program.

Quick and easy mobilization

Echologger EU D032/ ECT D032 mobile kits can support quick and easy mobilization with optional Bluetooth power pack or directly to data collector/mini PC through USB port or long-range wifi module



- USV application
- EU D032/ ECT D032
 - RTK/PPK GNSS
 - Survey poles
 - Mounting bracket

- Small boat application
- EU D032/ ECT D032
 - RTK/PPK GNSS
 - Survey pole
 - Mounting bracket
 - Rugged tablet / Data collector

- Small boat application
- EU D032/ ECT D032
 - RTK/PPK GNSS
 - Survey pole
 - Mounting bracket
 - DU-BS21 (BT power pack)

- Small boat application
- D032
 - RTK/PPK GNSS
 - Survey poles
 - Mounting bracket
 - Long-range WiFi

Specifications

Acoustic Frequency	30 kHz / 200 KHz
Beam width	26° / 5° Conical (-3dB) (echo mode)
Transmit Pulse Width	100µsec ~ 1,000µsec
Transmit Power	Max. 30 W, adjustable
TVG Control	Up to 60 dB,
Gain Control	-30 dB to +30 dB
Operating Distance Range	1.5 m ~ 200 m (30 kHz) / 0.5 m ~ 200 m (200 kHz)
Repetition (Ping) Rate	100 Hz max
Sampling Rate	Max 100 kHz; adjustable, or auto mode (default)
Water Column Resolution	Appx. 7.5 mm @ 100 kHz sampling
Altimeter Range Resolution	1.0 mm
Temperature sensor Resolution	0.1°C
Tilt sensor integrated	Dual-axis (Roll & Pitch) ±90°, Inclination data resolution 0.1°
Digital Output Interface	EU D032: USB 2.0 ECT D032: RS-232, RS-485 (selectable)
Communication Speed	EU D032: 4,800 ~ 921,600, 3M baud (115,200 baud default) ECT D032: 4800 ~ 921,600 baud (115,200 baud default)
Data Output Format	Profile 10/12bit resolution ASCII Text Profile 12bit Binary / 8bit companded Binary Altitude NMEA0183 / Simple Altimeter Deso-25 Sonarmite DFX
Configuration and Data reading	Echologger Echosounder Control Program (Dual) or any Terminal program
Multi node Internetworking (RS485 only)	Up to 32 units
Connector	EU D032: LTW 12-05PMMS-SH8003 ECT D032S: LTW M12A-08PMMS-SH8002 ECT D032: SEACON MCBH8SS
Power supply	EU D032: USB Powered, 2W max ECT D032: 10 ~ 75 VDC, 2W max, Internally isolated
Operation Temperature	-10°C +50°C
Operating Depth	EU D032 / ECT D032S: 1m (for surface vehicle) ECT D032C: 100m
Housing	Acetal
Dimensions	∅96 mm x L90 mm (without connector)
Weight	740g (without cable)
Other features	Use both frequencies simultaneously or separately Compatible with major hydro-graphic softwares (Hypack, HydroMagic, HydroPro etc.) GPS integrated data



EofE Ultrasonics Co., Ltd.

303, Venture Center, Hanggongdaehangro 76
Goyang-Si 10540, Korea
Tel : +82-2-3158-3178
info@echologger.com

